

Home challenges:

During our topic lessons this term we will be learning all about how life has changed within living memory. Undertaking the following challenges will help us greatly in the teaching of this topic.

Challenge 1:

Your child will be bringing home a short questionnaire to ask family members about what school was like in the past. Please complete this questionnaire with your child and return it back to us. Can Grandparents complete a section too? Why not send in a photograph of you at school via SeeSaw too?

Challenge 2:

Take your child on a local walk around Stapleford. Did you know that there are three historical blue plaques around the town? Can you find them and send a photograph of you with them via SeeSaw?

Challenge 3:

Look at the images below. Do you recognize where they were taken? If so, visit the site now and note down how the area has changed.



Autumn 1 2023

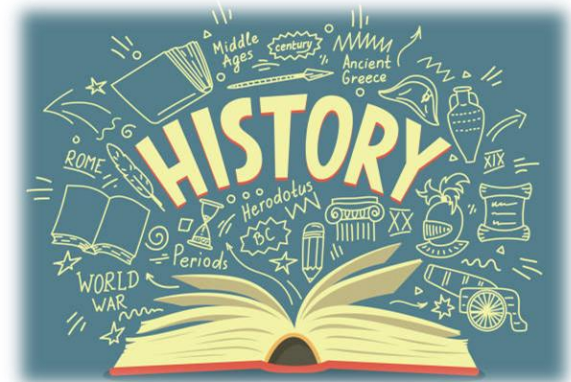
KS1

Mr Hancock, Dr Harris and | Mrs Allen

How has my local area changed within living memory?

Weekly Questions:

- How has my school changed within living memory?
- How has Stapleford changed within living memory?
- How has Nottingham changed within living memory?

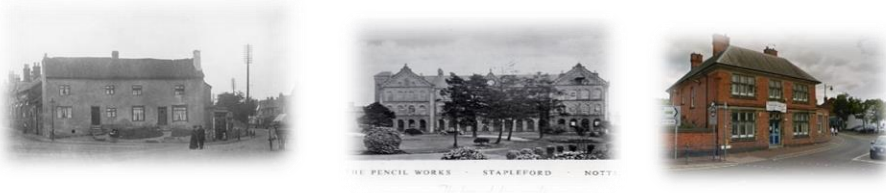


KS1 Knowledge Organiser: How has my local area changed within living memory?

Stapleford now



Stapleford in the past



Chronological order

Your Grandparents were born.

Your Grandparents went to school.

Albany Infant school was built (1952)

Your mum and Dad went to school.

You were born

You are at Albany Infant School

A long time ago

Changes in Living memory

Now

Definitions

Decade	A decade is a period of 10 years.
Century	A century is a period of 100 years.
Chronological order	If events are in chronological order they are put in the order that they happened.
Artefact	An object made by a human that is from the past.
Living memory	If something has happened within living memory it means that there are people are still alive to ask about that event.
Source	A source is an object or thing that provides information.
Present	The period of time happening now.
Past	A period of time that has already happened.
Timeline	A chronological arrangement of events in the order